

3 Tennis Court

Hamilton Township, NJ 086190

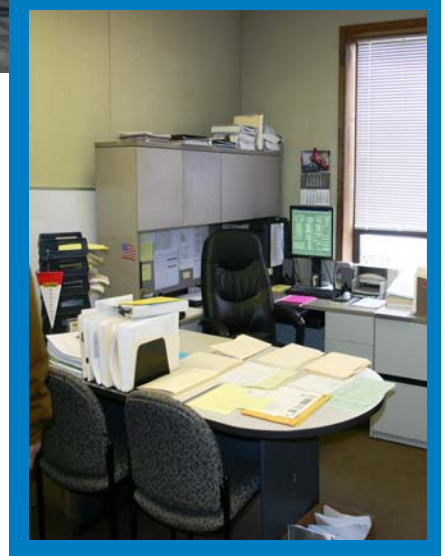
a 21,150 SF Office/Warehouse/Industrial Building



available July 2010

building information

- ◆ 21,150 square feet for Sale or Lease
- ◆ Built in 1986, 2.13 Acres
- ◆ Building at 5 Tennis Court also available
- ◆ Zoned Manufacturing, 38 Parking Spaces
- ◆ 10 Drive-in Doors, Large Fenced Yard
- ◆ Sale Price - \$85.00/SF, '09 Taxes - \$1.54/SF



FOR MORE INFORMATION OR A PRIVATE SHOWING:

Paul McArthur

609-466-0400

pim@trilliumrealty.com

Mark Bennison

609-466-0400

mcb@trilliumrealty.com



Trillium Realty Advisors, L.L.C.

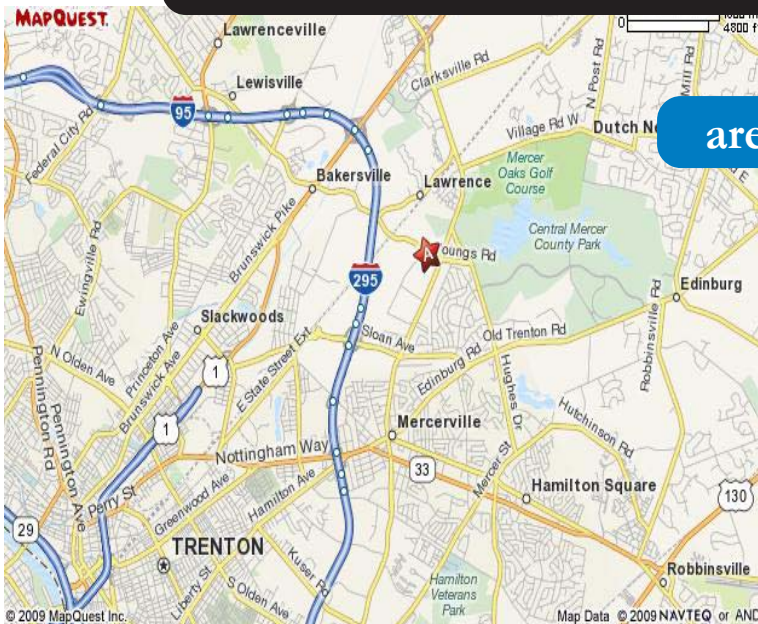
83 Princeton Avenue, Hopewell, NJ 08525

Information concerning this offering is from sources deemed reliable, but no warranty is made to the accuracy thereof and it is submitted subject to errors, omissions, change of prices or other conditions, prior sale or lease or withdrawal without notice.

3 Tennis Court

Hamilton Township, NJ 08619

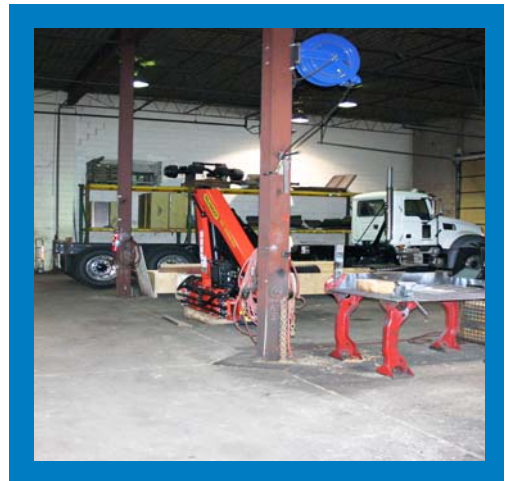
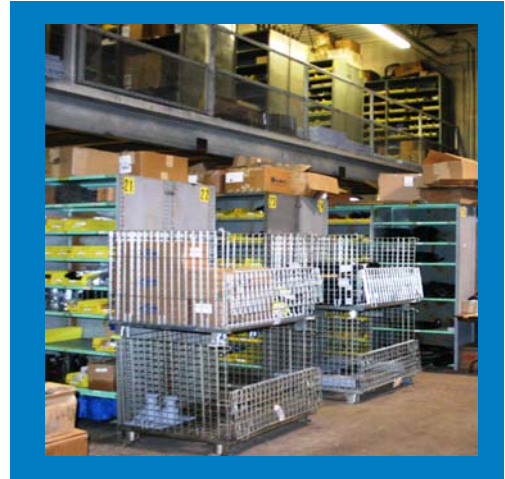
a 21,150 SF Office/Warehouse/Industrial Building



area map

amenities

- ◆ Mezzanine Storage
- ◆ +/- 1,500 SF of Office Space
- ◆ 20' Clear, Column Spacing is 20' x 40'
- ◆ Drive-In Paint Booth w/Sprinkler
- ◆ 800 Amp Electrical Service
- ◆ Between Quakerbridge Rd and Route 1
- ◆ Suspended Gas Warehouse Heaters



FOR MORE INFORMATION OR A PRIVATE SHOWING:

Paul McArthur

609-466-0400

pim@trilliumrealty.com

Mark Bennison

609-466-0400

mcb@trilliumrealty.com



Trillium Realty Advisors, L.L.C.

83 Princeton Avenue, Hopewell, NJ 08525

Information concerning this offering is from sources deemed reliable, but no warranty is made to the accuracy thereof and it is submitted subject to errors, omissions, change of prices or other conditions, prior sale or lease or withdrawal without notice.